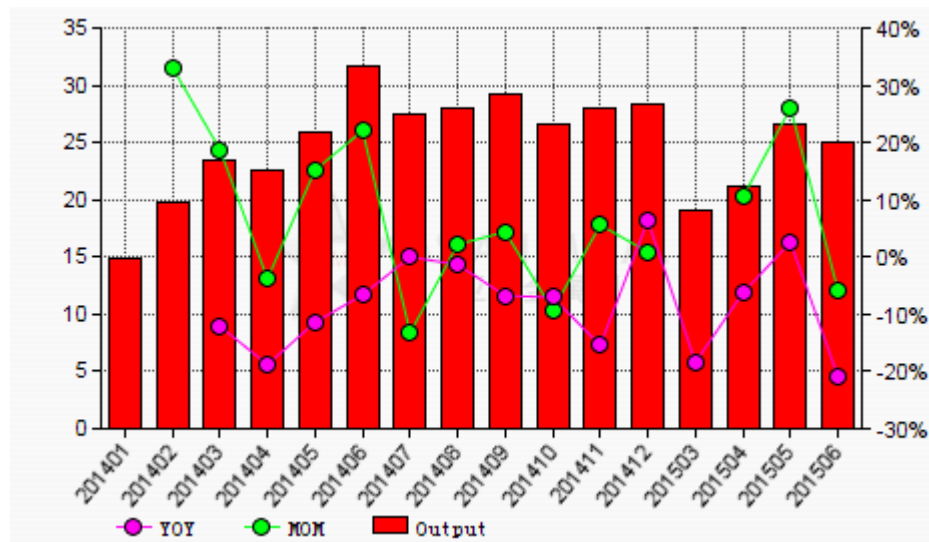


## China's lead concentrate output down by 8.74% YOY in H1 2015

BEIJING (Asian Metal) 20 Jul 15 - According to data released by the National Bureau of Statistics of China, the lead concentrate output declined by 6.02% month-on-month and 0.90% year-on-year to 250kt in China in June 2015.

The output declined by 8.74% year-on-year to 1,138kt during the first half of 2015.

The following graph shows China's lead concentrate output Jan 2014-Jun 2015



With the weather turning warmer, more lead-zinc mines resumed production in Inner Mongolia, Xinjiang, Qinghai and Tibet, contributing to the increase in lead concentrate output in June. However, the decline in lead concentrate output on the southern Chinese market offset the increase, leading to the decline of the total lead concentrate output in June.

Impacted by the strict inspection on the safe-production and environmental protection, many small-sized lead-zinc mines were out of production this year. Meanwhile, although some major lead-zinc mines expanded production capacity in China this year, their lead

concentrate output was limited. Therefore, the lead concentrate output may not increase greatly in the second half of this year.

However, China's lead concentrate import increased and lead smelters ran with low operation rates in the first half of this year, so shortage of lead concentrate supply may ease gradually on the Chinese market this year.