



Ghana Bauxite Company Limited
A member of the IOP Group

Ghana Bauxite Company (GBC)
Mining and Development Report

Ghana Bauxite Company (GBC)

Mining and Development Report

May 19, 2023





Outline

- ◆ *History of Awaso Bauxite Mining*
- ◆ *Operation Sites of the Company*
- ◆ *GBC operation Flow: Mining, Crushing, Washing, Transportation and Ship loading.*
- ◆ *Takoradi Port for Bauxite Export*
- ◆ *GBC Expansion Plan*

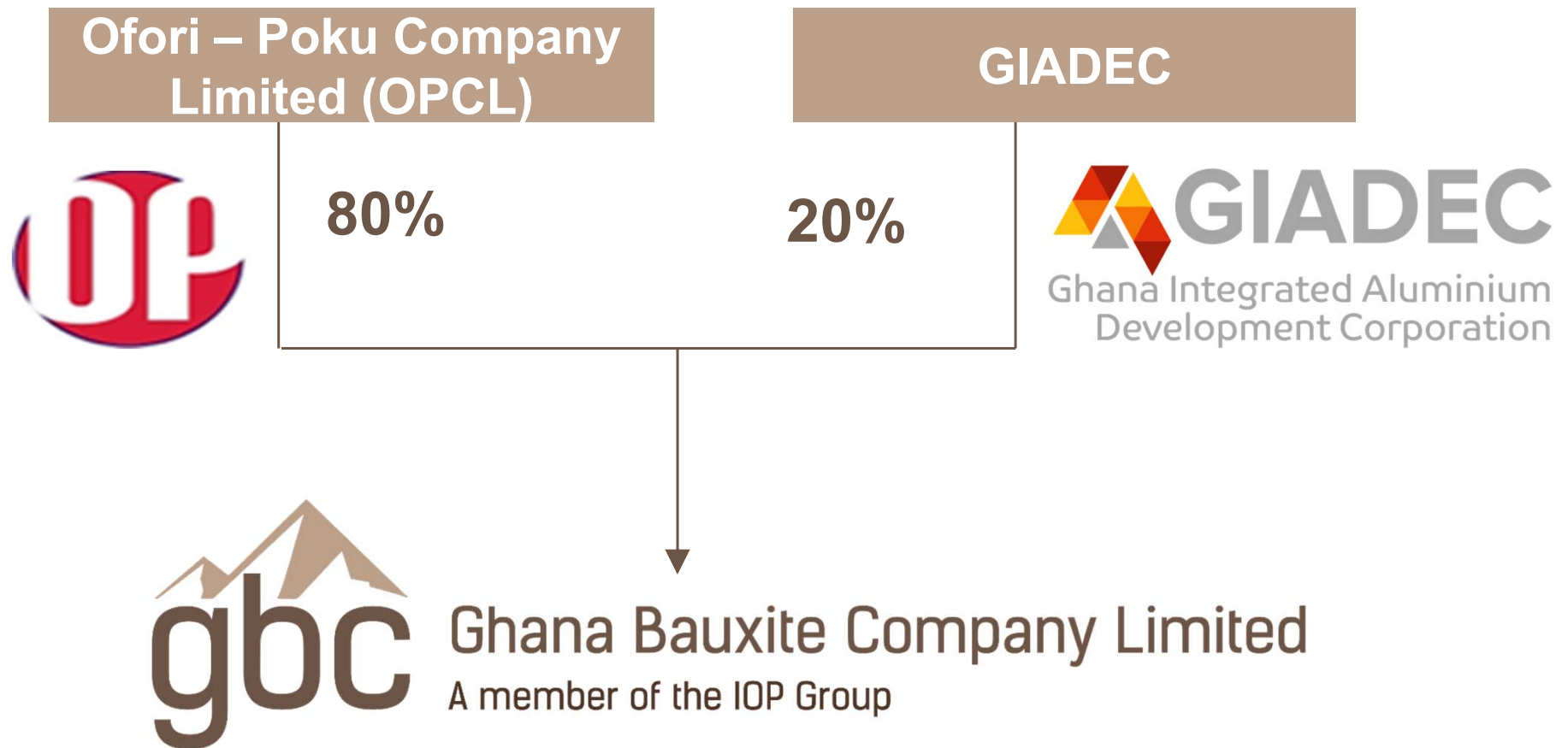


History of Awaso Bauxite Mining

- ◆ **1921 Bauxite discovered in Awaso Area**
- ◆ **1940 Commencement of bauxite mining by British Aluminum Co Ltd (BAC)**
- ◆ **1944 Rail line extended from Dunkwa to Awaso**
- ◆ **1974 Government of Ghana acquired 55% of Ghana Bauxite**
- ◆ **1982 BAC sold its 45% shares to British Alcan Inc.**
- ◆ **1997 Divestiture - Alcan 80%, GoG 20%**
- ◆ **1998 Alcan was acquired by Rio Tinto to become Rio Tinto Alcan**
- ◆ **2010 Rio Tinto Alcan sold its 80% shares to Bosai Minerals Group, China**
- ◆ **2022 Bosai Minerals sold its 80% shares to OPCL, a Ghanaian Consortium.**



GBC New Shareholding Structure





New Mining Lease

- ◆ *After taking over by OPCL, GBC's mining lease was renewed for 30 years.*
- ◆ *Additional bauxite reserves will be added to existing concession.*
- ◆ *Total bauxite resources: over 300 million mt.*

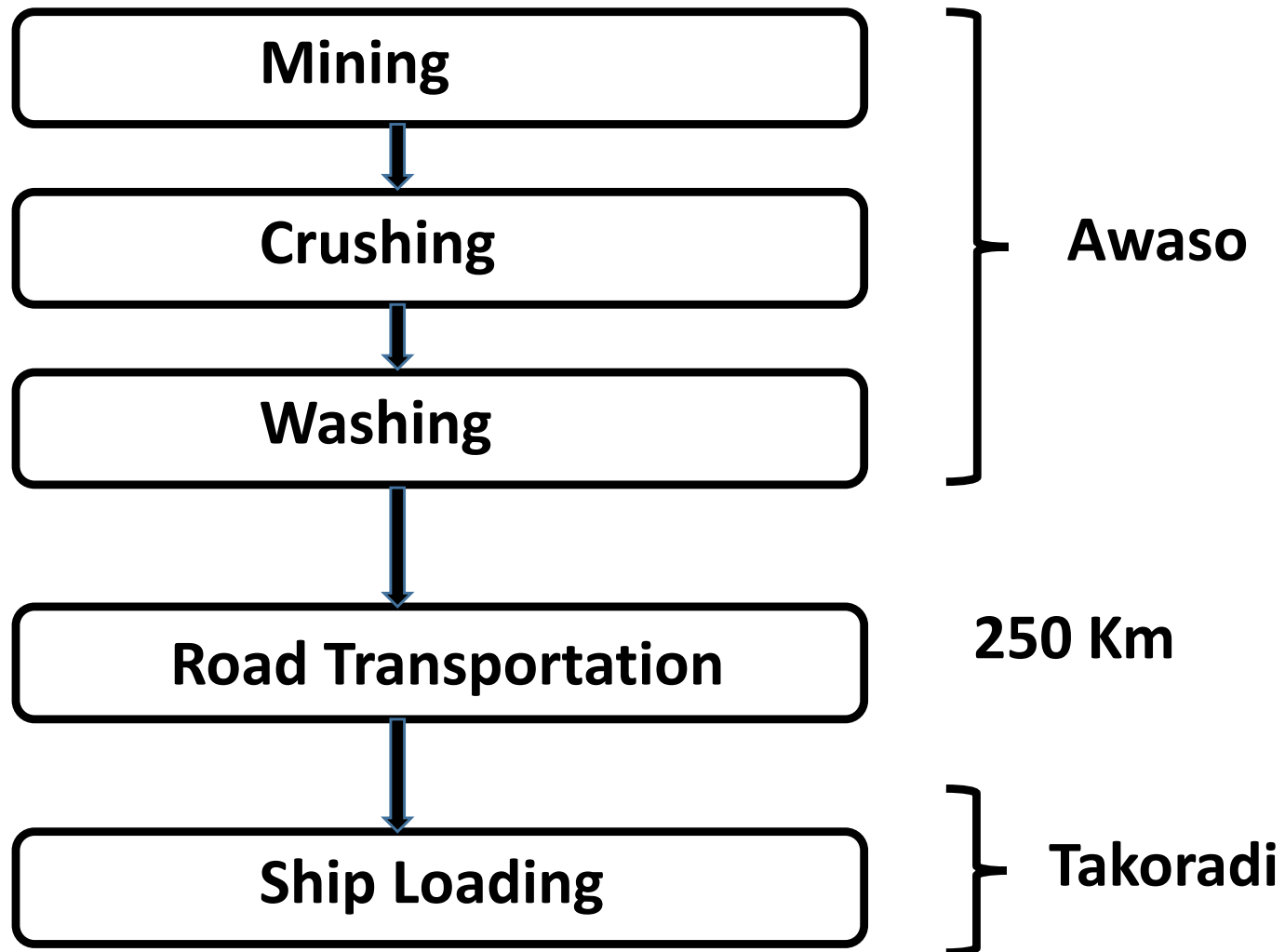


Operation Sites of Ghana Bauxite Company



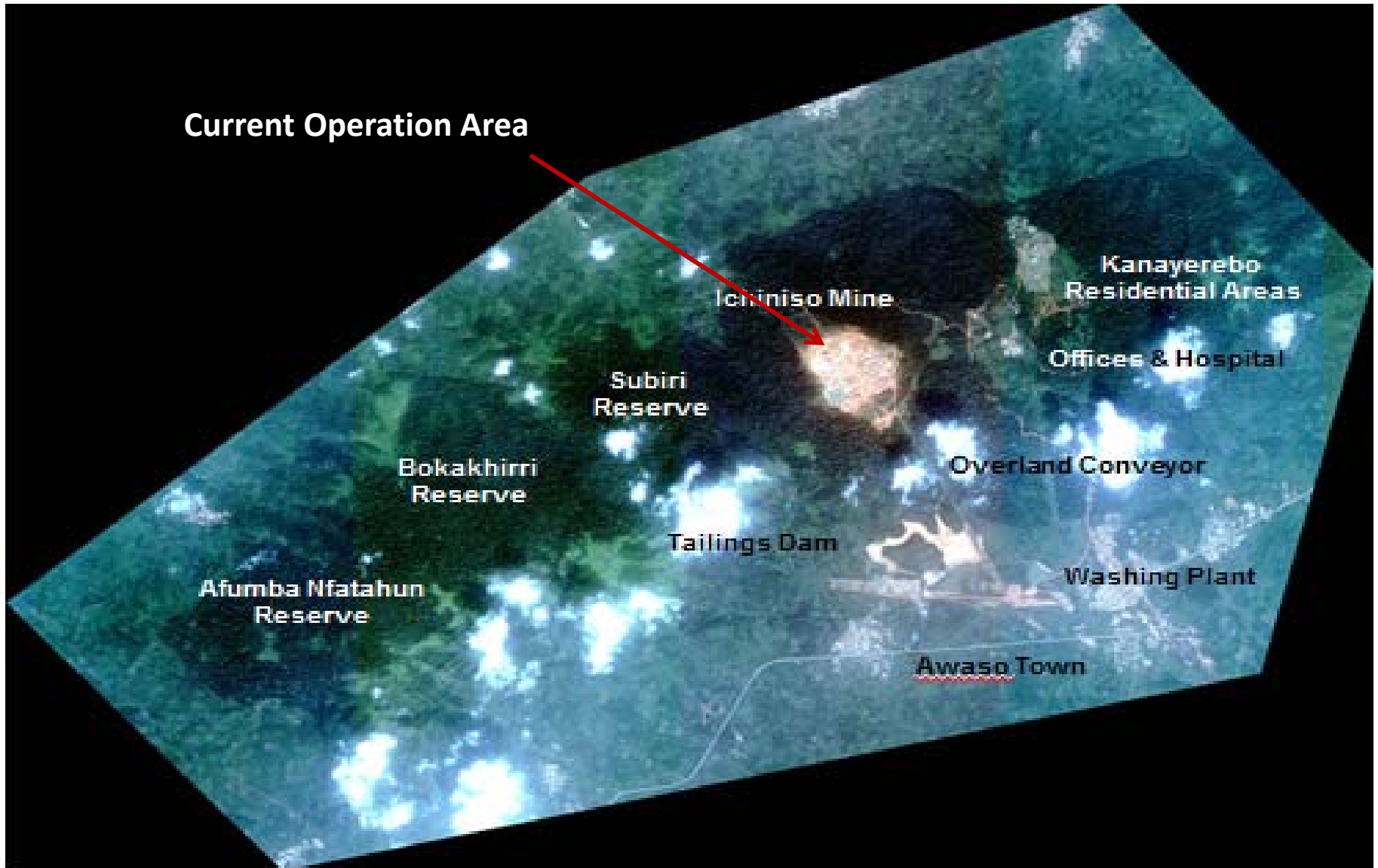


GBC Operation Flow





Satellite View of Bauxite Mining Operations





Ghana Bauxite Company Limited
A member of the IOP Group

*Ghana Bauxite Company (GBC)
Mining and Development Report*

Inchiniso Open Pit Bauxite Mine

- ◆ 3 benches at 6 meters each





Mining: Vegetation Clearance and Overburden Stripping





Ghana Bauxite Company Limited
A member of the IOP Group

Ghana Bauxite Company (GBC)
Mining and Development Report

Mining : Hole Drilling and Blasting



May. 19, 2023

Confidential



Mining: Loading Ore to Crushing Plant



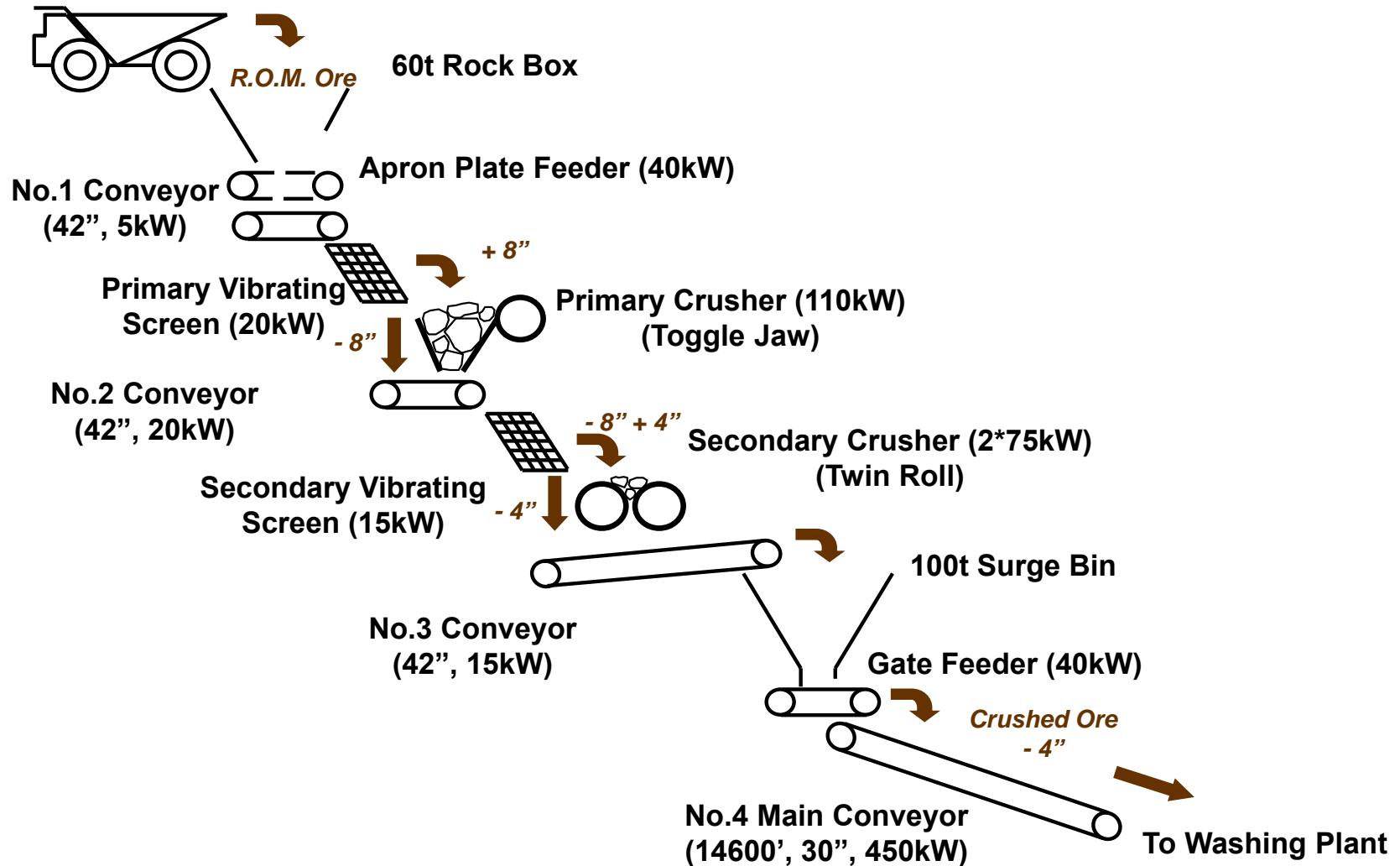


Crushing : Feeding the Crushing Plant





Crushing: Crushing Plant Flow Sheet





Crushing Plant



Primary Screen

60 Ton Bin

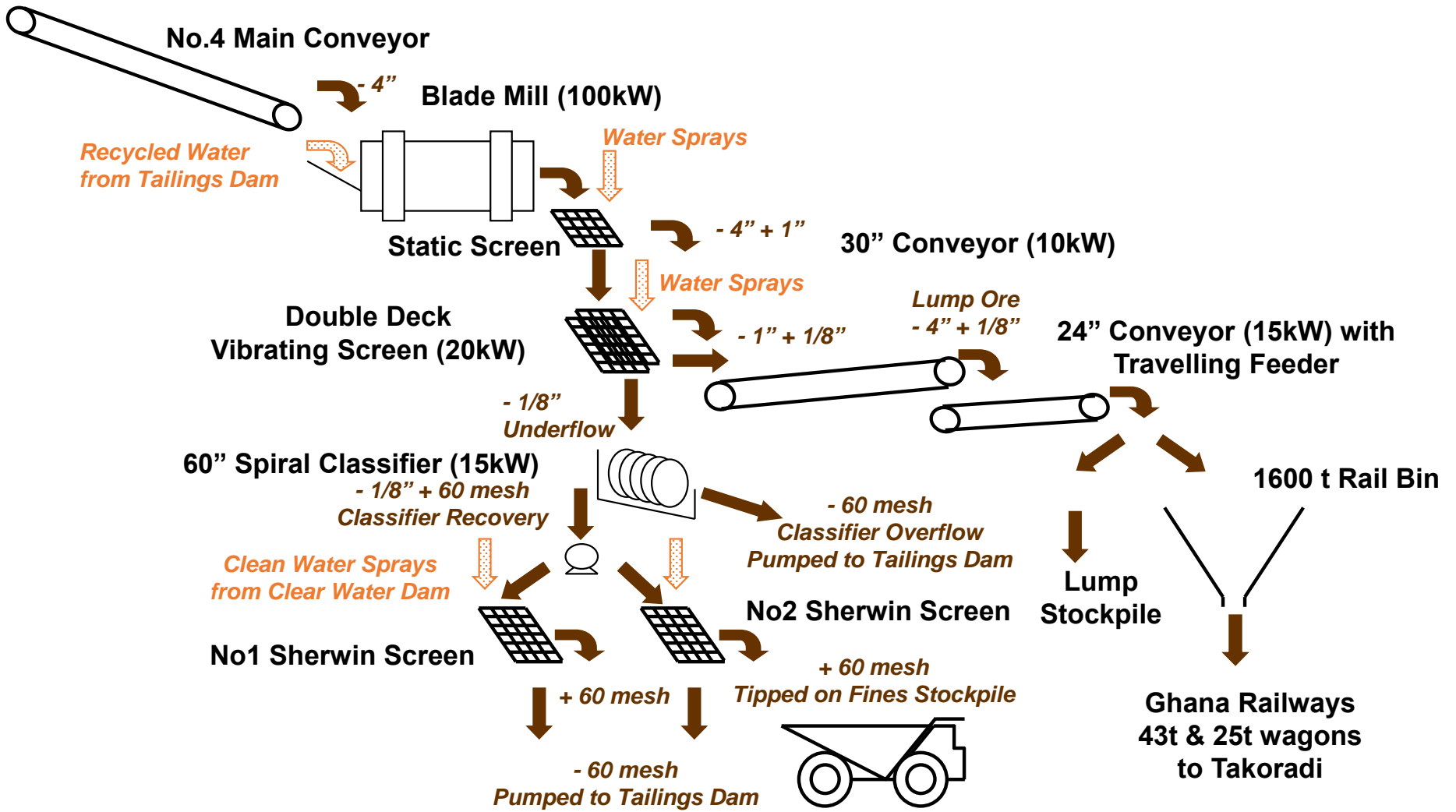




2.2 Km Overland Conveyor bet between the Crushing Plant and the Washing Plant



Washing: Washing Plant Flow Sheet





Ghana Bauxite Company Limited
A member of the IOP Group

Ghana Bauxite Company (GBC)
Mining and Development Report

Birdseye's view of Washing Plant





Stockpile Management at Washing Plant





Ghana Bauxite Company Limited
A member of the IOP Group

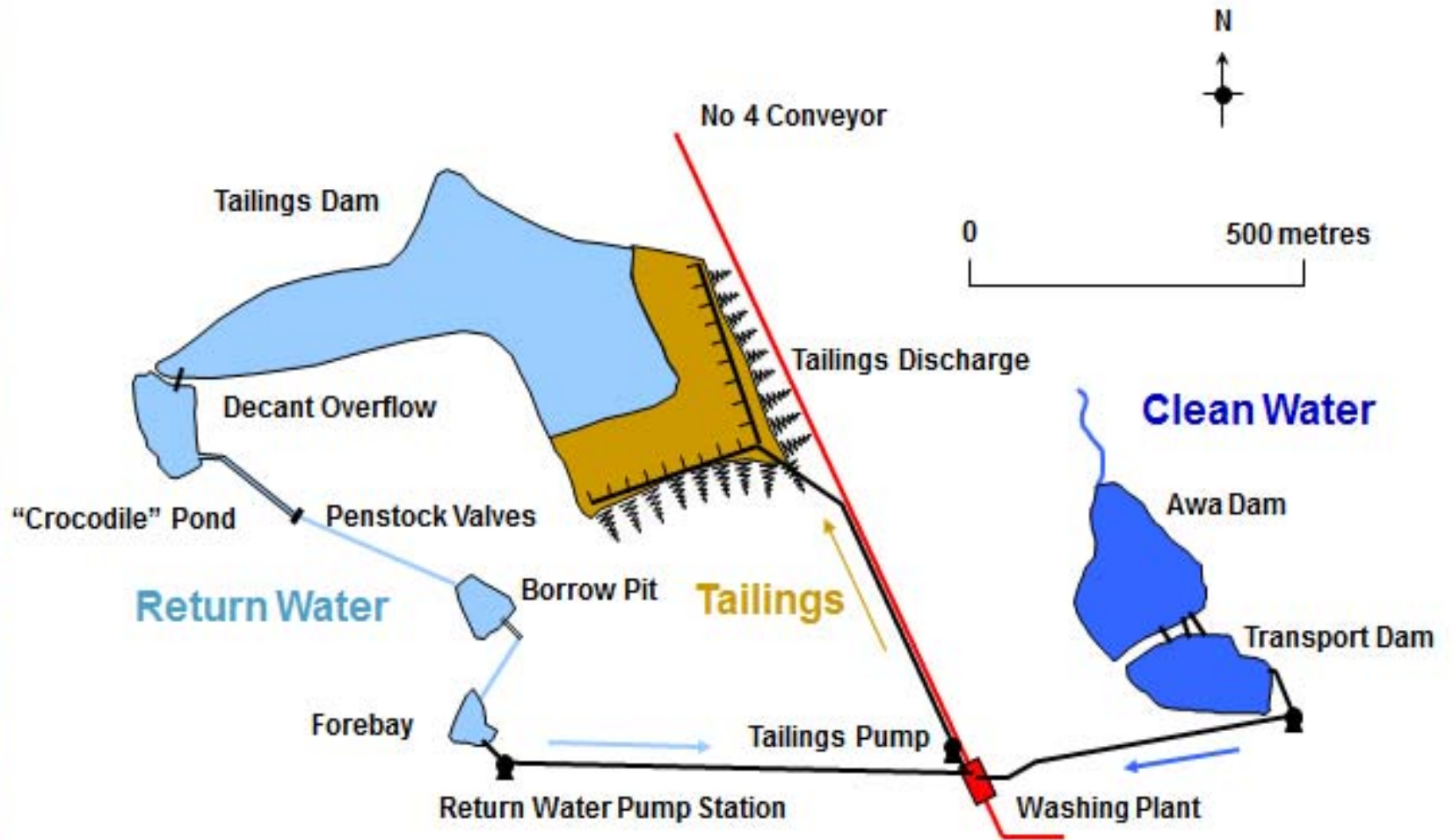
*Ghana Bauxite Company (GBC)
Mining and Development Report*

Tailings Dam





Water Reticulation System





Loading Haulage truck





Ghana Bauxite Company Limited
A member of the IOP Group

Ghana Bauxite Company (GBC)
Mining and Development Report

A Fleet of 140 haulage trucks





Production Capacity

2023: 2.0 Million mt (Planned Expansion)

2024: 5.0 Million mt (Planned Expansion)

Typical Quality

Al₂O₃: 51%

SiO₂: 2%

Moisture: 9%



Ghana Bauxite Company Limited
A member of the IOP Group

Ghana Bauxite Company (GBC)
Mining and Development Report

Bauxite Stockpile Management at Takoradi Port



May. 19, 2023

Confidential

25



Takoradi Port Dry Bulk Jetty for Bauxite Export

Water depth: -16 m, Max ship draft: 15 m.



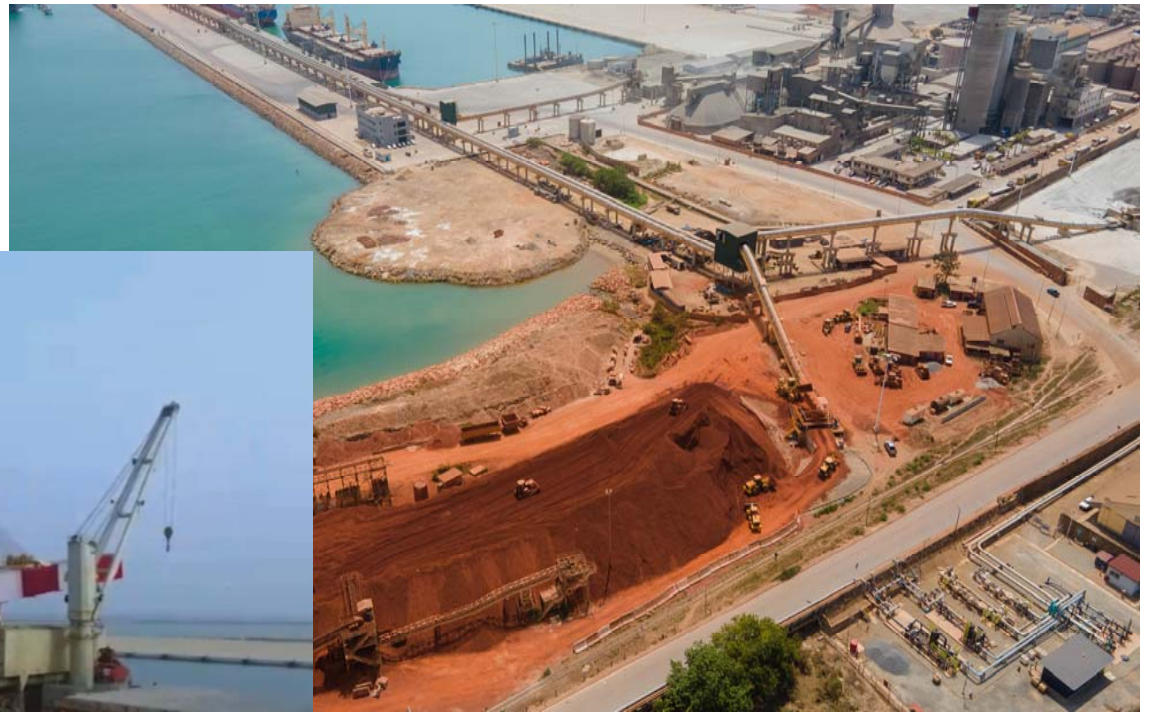


Ghana Bauxite Company Limited
A member of the IOP Group

Ghana Bauxite Company (GBC)
Mining and Development Report

New Ship-loading conveyor belt and ship-loader

Loading Rate: 8,000 ~ 20,000 mt per day.





Ghana Bauxite Company Limited
A member of the IOP Group

Ghana Bauxite Company (GBC)
Mining and Development Report

Planned Expansion Drive – Purchase of Equipment



May. 19, 2023

Confidential

28



Expansion Work ongoing on the Subri Hill







Ghana Bauxite Company Limited
A member of the IOP Group

Ghana Bauxite Company (GBC)
Mining and Development Report

Thanks for your attention!



GBC Senior Staff Bungalows